



**BLUE ROCK**  
LOGISTICS

## A Leader of TMS & Analytic Solutions



Logistic experts with a key commitment to collaboration



An independent and creative mindset to develop fast, move fast, and deliver fast



Cutting edge SaaS software currently serving over 30 countries from six offices



# Pick & Choose Modular Platform



BlueRock TMS goes deep, combining operative and analytical functionalities into one modular platform. It provides real-time information for global users with various roles and responsibilities.

The BlueRock platform is built 100% from scratch and not through acquisitions.

Customers have the ability to **Pick & Choose** specific modules, allowing for the flexibility to address current and future needs.



# Intelligent & Scalable Architecture

BlueRock TMS is an innovative solution that combines the preparation, execution, and analysis of your transportation network into a singular, powerful SaaS platform.

## Smart Modular Architecture

- > Completely integrated platform
- > Designed to support Pick & Choose functionality
- > Multi-language capabilities and international formats

## Integrated Analytics

- > Extensive modeling and simulation capabilities
- > In-house developed algorithms
- > Strong links to extensive academic research

## Data Management

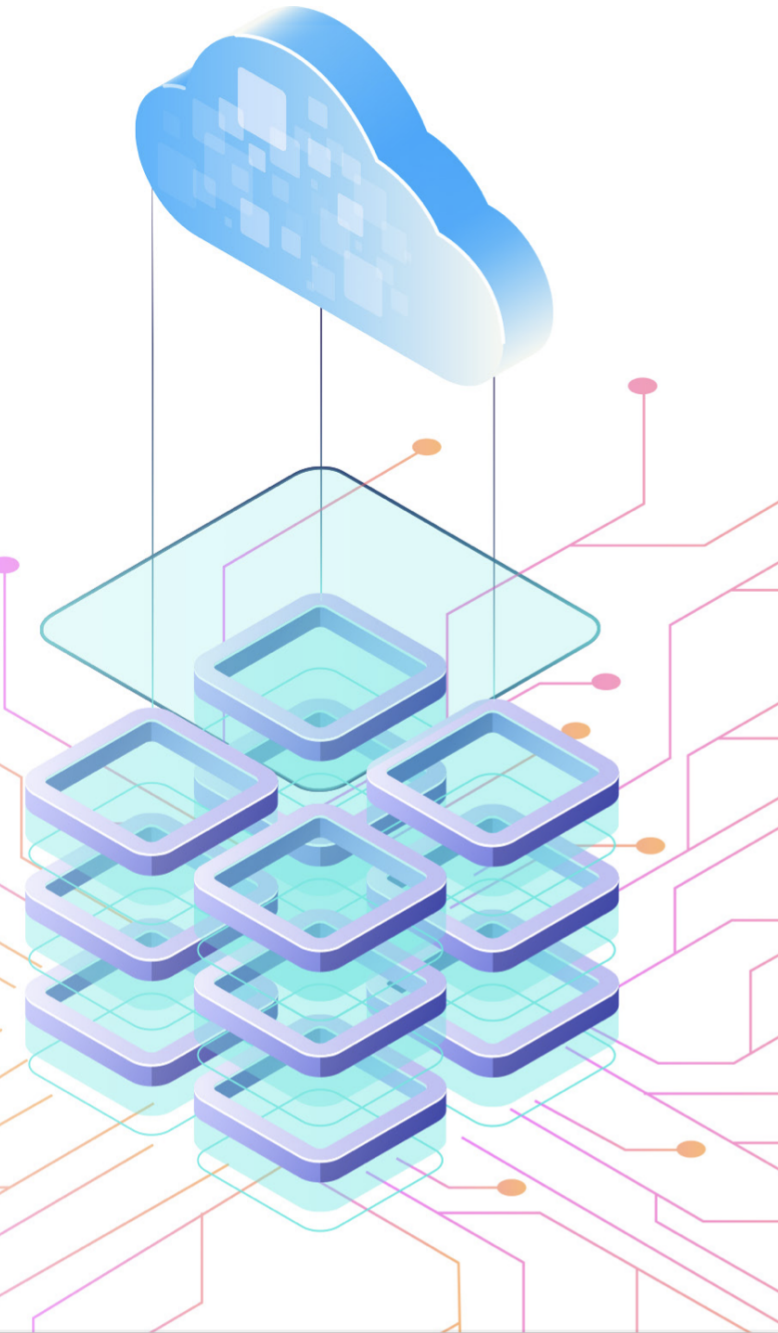
- > Cloud Native solution hosted in AWS or Private Cloud
- > Single-Tenant Containerized approach
- > Data privacy is enforced on multiple layers of the architecture

## Integration

- > Templated integration available for leading WMS/FMS/ERP systems
- > Existing pool of integrated carriers and telematics providers
- > Proprietary Low-Code integration tool for quick on-boarding

## DevOps Approach

- > 99.5% guaranteed availability
- > Automation of regular tasks
- > Shortened development life cycle with continuous delivery of high software quality



# Smarter All the Way

*We engage intensively with our customers.  
We develop together, step-by-step and side-by-side in a natural growth path.*

**Living  
SaaS  
Platform**

**Forward Thinking**

Our Core Development Team continuously enhances the platform, keeping you at the forefront of industry innovation.

**Continuous Expansion**

Expanding connectivity with carrier networks and telematics.

**Customer Driven**

Industry specific solutions with specific support for personalized requirements.

**Collaboration**

Supporting your platform users quickly is a key priority for our team.

## We support customers in the following sectors:

Network Operators

Logos for DB SCHENKER, dpd, and Purolator.

Contract Logistics

Logos for Bleckmann, FIEGE, B3, and BROEKMAN LOGISTICS.

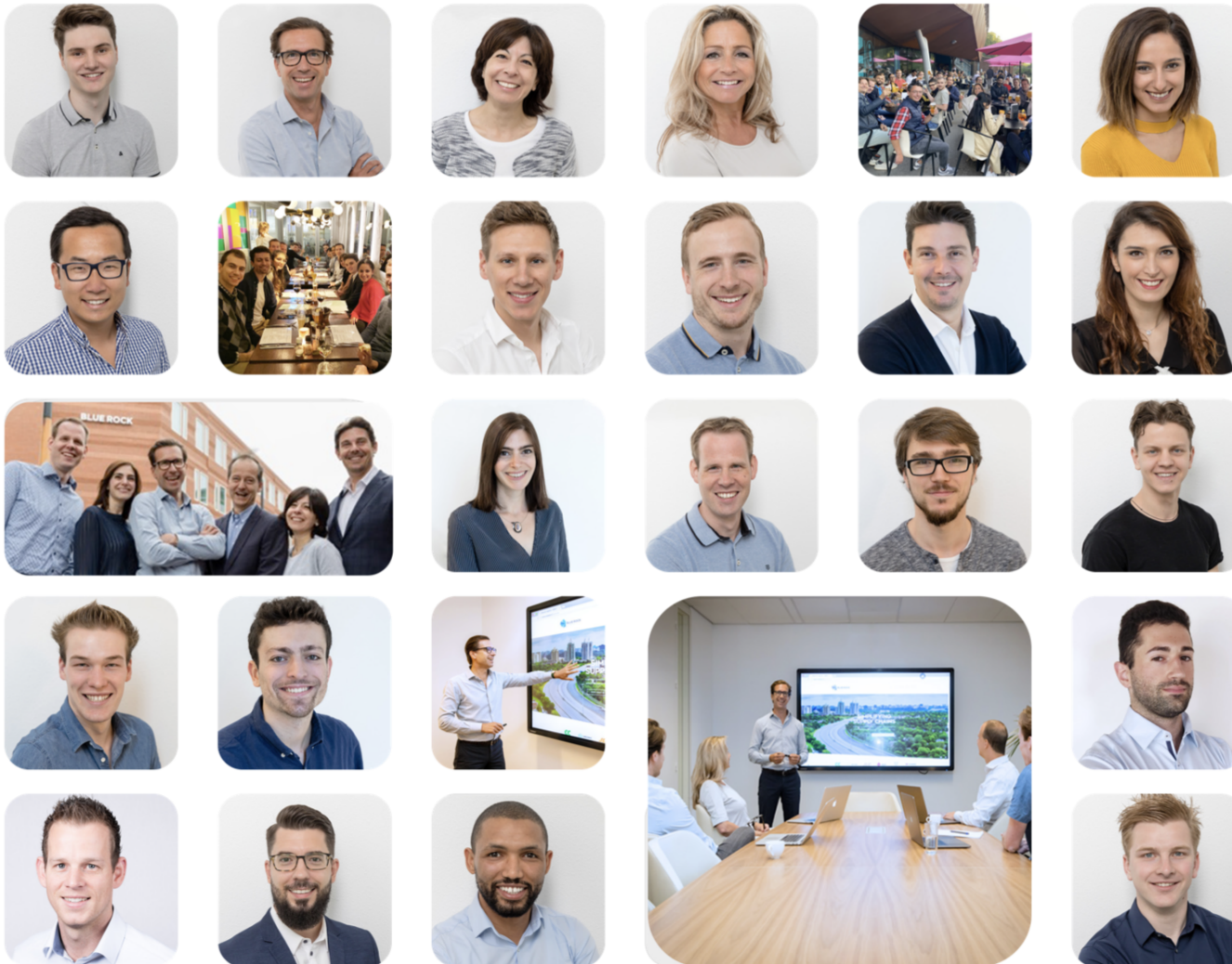
Shippers (Pharma, Food & Beverage, Fashion, Industrial)

Logos for MARCOLIN EYEWEAR, Unilever, JLG, W.T. ERRETTI, ARCONIC, HG, CAMPARI, Vivienne Westwood, HOWMET AEROSPACE, GRANDI MOLINI ITALIANI, Buzzi Unicem, and LivaNova.



# Contact Us

*We look forward to hearing from you!*



**BLUE ROCK**  
SMARTER ALL THE WAY

**CEO**

Wouter Lammerse

**HQ**

[info@bluerocklogistics.com](mailto:info@bluerocklogistics.com)

**North America**

Jeff Thorne

[j.thorne@bluerocklogistics.com](mailto:j.thorne@bluerocklogistics.com)

**Benelux**

Ruud Simkens

[r.simkens@bluerocklogistics.com](mailto:r.simkens@bluerocklogistics.com)

**Italy**

Stefan Polet

[s.polet@bluerocklogistics.com](mailto:s.polet@bluerocklogistics.com)

**Germany**

Tobias Tolkmitt

[t.tolkmitt@bluerocklogistics.com](mailto:t.tolkmitt@bluerocklogistics.com)

**Asia and Other Markets**

Luigi Biondani

[l.biondani@bluerocklogistics.com](mailto:l.biondani@bluerocklogistics.com)