



PensionBenefitsXG

Manage retirement plan complexities with ease and security



THE RIGHT RETIREMENT TECHNOLOGY IS SMARTLY DESIGNED TO ADAPT TO *YOUR* PLAN rules, your members' needs and the ever-changing regulatory environment. Built with more than 40 years of Taft-Hartley experience, **PensionBenefitsXG** from basys can easily and securely help you manage the most complex plans with ease – whether you administer Defined Benefit, Defined Contribution or hybrid plans.

So much goes into your members' pension decisions, and basys is making it easier for you to help members with these tough choices and complex processes.

PensionBenefitsXG simplifies the most complex plans, helps streamline and automate routine processes and integrates with the basys **MemberXG** self-service portal so your members have secure access to their detailed data on their schedule. Basys retirement technology can simplify your 401(k), 401(a) and 403(b) plan management as well as track and process Vacation, Savings, Supplemental Unemployment, Legal Assistance and other benefits plans.

Data exports seamlessly to interface with major retirement plans like Fidelity,

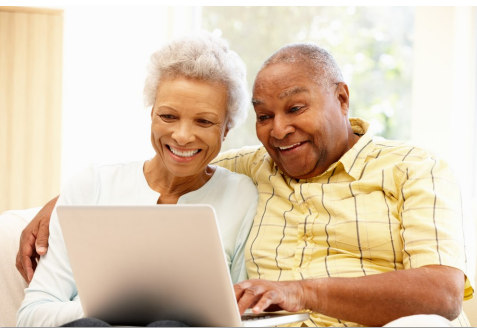
Prudential and Mass Mutual, so coordinating with key vendors and providing members a full picture of their retirement options is easier than ever.

The parameter-driven basys calculation engine delivers a straightforward representation of your plan rules to ensure accurate calculations of benefit amounts, determine retirement options, disburse retiree benefits and facilitate actuarial reporting. The Fund Office can run retirement scenarios for members to help with their planning and decision-making, or members can model pension choices themselves via the member portal.

PensionBenefitsXG helps you streamline retirement plan management so you can better benefit your members.

About basys

Since 1977, basys has specialized in benefits administration solutions for the Taft-Hartley community, providing cloud-based, integrated technology that helps trust fund offices, national multiemployer plans and TPAs accurately and efficiently serve millions of members across the US and Canada.



Product Features

- ◆ User-friendly interface provides immediate access to key pension information.
- ◆ Flexible and efficient creation of individual ad hoc statements.
- ◆ Member-level Defined Benefit Pension Alerts notify operator of QDRO, IRS levy or other special circumstances.
- ◆ Link and view existing document images with a correspondence item for easy access to related documents like a pension application and supporting documentation.
- ◆ Pensioner display combines disbursement history and register lookup.
- ◆ Data view matches member's stub or advice for simplified member service.
- ◆ Member Account Balances display is configurable, making it easier to view and administer Defined Contribution pension, 401(k), HSA and vacation balances.
- ◆ Beneficiary Allocations display allows users to designate beneficiaries and allocations by tier level and fund, managing effective dates with a broad view of change history.
- ◆ Member Withholdings display shows users the default set-up for each withholding type.
- ◆ Pension Scenarios feature provides the ability to project a member's future pension benefit based on projected retirement date, age and pension type. This matches the Pension Projections add-on for **MemberXG** so the Fund Office can reproduce the same scenario.

- ◆ Integrates with **MemberXG** to give members 24/7 access to their pension information from any internet-connected PC, tablet or smartphone.

Plan Year	Pension Contributions	Benefit Cdt (Yrly)	Benefit Cdt (Totl)	Vesting Credit (Yrly)	Vesting Credit (Totl)	Action Code
2013	3,414.60	1,000	9,500	0.250		
2014	5,447.00	1,000	10,500	0.500		
2015	6,602.38	1,000	11,500	0.500		
2016	10,221.27	1,000	12,500	0.750		
2017	9,322.18	1,000	13,500	0.750		
2018	9,958.68	1,000	14,500	0.750		
Total:		92,991.31				

Thru Year	Type	Accumulation	Rate	Amount
2004	Credit	3.000	50.0000	150.00
2018	Contributions	65,516.810	0.0300	1,965.50

Enclosures	Value	By	When
Benefit Counseling	Y	DAN	8/23/2019
Desig. of Beneficiary	Y	DAN	8/23/2019
Date Application Mailed	8/23/2019	DAN	8/23/2019
Date App Returned			
Union Cert. on file?			
Soc. Sec. Norm Ret Age			
Soc. Sec. Estimate			
Soc. Sec. Breakdown			
Soc. Sec. Award of Dis.			
Enc. Cor. Cont. Member			